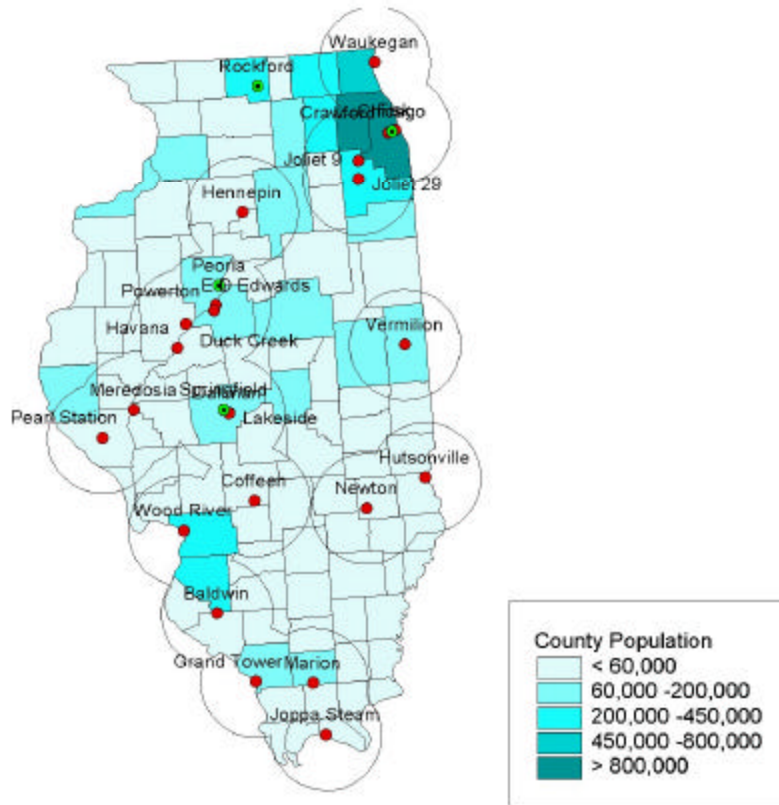


# Illinois State Profile of Exposure to Coal-Fired Power Plants



## Map Legend

Circles Represent a Thirty Mile Radius around Power Plants

Major Cities are Shown

## State Profile

Total Number of Power Plants	24
Total Reported Releases	
Air	92,931,607
Land	3,187
Water	24
Total Lake Acres/River Miles under Mercury Fish Advisory	3,898 / 0
Total Ozone Non-Attainment Areas	11

## Exposure Within 30 Mile Radius

Total Population	11,058,624
Total Number of Children	2,746,764
Total Number of Children in Poverty	561,078
Total Number of Children With Asthma	157,659

# Environmental Release Profile

Air Releases are for 2000

Land and Water Releases are for 1998

## Illinois

Air Releases (tons except where noted)

Land Waste in Tons (on site (off site))

Plant Name	County	Air Releases									Land Waste				Total Reported Water Releases
		Total Reported Air Releases	NOx	SO2	CO2	PM2.5	PM10	VOCs	Acid Gases	Mercury (lbs)	Total Reported Land releases	Arsenic	Chromium	Nickel	
Baldwin	Randolph	11,067,562	26,337	36,599	10,999,084	709	1,191	220	4,131	343	573	26 (0)	41 (0)	40 (0)	0
Coffeen	Montgomery	4,932,472	25,806	39,090	4,864,797	55	94	112	2,572	165	146	0 (15)	0 (13)	0 (7)	0
Crawford	Cook	3,210,914	5,517	9,332	3,195,562	183	293	52	158	366	15	0 (0)	0 (0)	- (-)	1
Dallman	Sangamon	2,094,232	10,164	22,427	2,060,328	0	0	0	1,313	69	13	0 (0)	0 (0)	- (-)	0
Duck Creek	Fulton	2,355,312	6,373	11,115	2,337,346	136	353	26	99		323	0 (0)	47 (0)	21 (0)	0
E D Edwards	Peoria	4,573,895	10,208	56,809	4,504,811	182	402	58	1,607	168	240	1 (14)	2 (21.8)	3 (35)	0
Fisk	Cook	1,806,565	3,208	4,848	1,798,309	61	87	32	82	201	10	0 (0)	0 (0)	- (-)	0
Grand Tower	Jackson	707,781	2,502	13,774	691,101	46	115	8	281	41		0 (0)	0 (0)	- (-)	0
Havana	Mason	2,631,573	5,751	10,977	2,614,371	110	250	35	189	107	114	0 (0)	0 (0)	- (-)	0
Hennepin	Putnam	1,906,257	3,331	5,732	1,896,367	93	206	26	596	59	104	0 (0)	8 (0)	8 (0)	1
Hutsonville	Crawford	661,404	1,705	13,828	645,728	32	77	8	59	28	9	0 (0)	0 (0)	- (-)	0
Joliet 29	Will	6,039,148	8,378	19,184	6,011,060	240	349	95	83	883	70	0 (0)	0 (0)	- (-)	4
Joliet 9	Will	1,397,545	4,983	4,309	1,388,029	96	114	39	71	207	70	0 (0)	0 (0)	- (-)	4
Joppa Steam	Massac	9,336,246	8,770	23,438	9,302,167	639	868	732	271	521	137	0 (0)	1 (0)	2 (0)	2
Kincaid	Christian	6,481,624	23,796	18,449	6,437,581	57	107	31	1,661	84	369	0.4 (20)	3 (29)	3 (24)	0
Lakeside	Sangamon	287,291	1,075	3,329	282,641	114	209	36	0	10		0 (0)	0 (0)	0 (0)	0
Marion	Williamson	1,879,493	7,543	13,632	1,857,708	143	322	39	249	58		0 (0)	0 (0)	0 (0)	1
Meredosia	Morgan	1,662,761	3,977	22,512	1,635,179	92	239	317	537	42	46	0 (0)	0 (0)	- (-)	1
Newton	Jasper	7,129,498	6,841	15,958	7,105,280	336	710	99	609	216	758	0 (0)	20 (0)	13 (0)	0
Powerton	Tazewell	8,648,750	33,775	22,771	8,591,243	174	361	207	393	988		0 (0)	0 (0)	0 (0)	4
Vermilion	Vermilion	1,011,446	2,094	13,001	995,759	87	192	21	379	27	66	0 (0)	0 (0)	- (-)	0
Waukegan	Lake	5,182,474	6,567	17,650	5,157,540	216	335	92	290	860		0 (0)	0 (0)	0 (0)	5
Will County	Will	5,773,376	11,317	16,230	5,745,084	178	312	116	317	806	44	0 (0)	0 (0.5)	0 (0.6)	1
Wood River	Madison	2,153,987	5,964	13,569	2,133,062	485	1,051	35	306	62	47	0 (0)	0 (0)	- (-)	0
<b>Total</b>		<b>92,931,607</b>	<b>225,982</b>	<b>428,563</b>	<b>92,250,137</b>	<b>4,463</b>	<b>8,237</b>	<b>2,436</b>	<b>16,252</b>	<b>6,312</b>	<b>3,154</b>	<b>28 (48)</b>	<b>122 (64)</b>	<b>90 (66)</b>	<b>24</b>

Notes and Sources: All releases are given in tons per year except for mercury which is given in pounds per year. Total air releases is the sum of NOx, SO2, CO2, PM10, VOCs, acid gases, and mercury (PM2.5 is included in PM10). The specific land waste metals were chosen due to their potential to contaminate groundwater. Metals listed include metals and their compounds. The Total Reported Land Releases column does not reflect all solid waste generated from coal-fired power plants. Water releases include total releases from the Toxics Release Inventory (TRI). SO2, NOx, and CO2 emissions come from the EPA's Continuous Emissions Monitoring System data for 2000. Mercury is calculated by applying the mercury emission rates developed in "Mercury Falling" (Environmental Working Group, Clean Air Network, and NRDC, 1999) to the heat input reported in the EPA CEMS data for 2000. PM2.5, PM10, VOCs, and acid gas emission rates were calculated based on the Clean Air Network's data for 1998 emissions. The emission rates were applied to the heat input for 2000. All other data came from the Clean Air Network 1998 data. All calculations were done by MSB Energy Associates for the Clean Air Task Force.

## Illinois Exposure Profile for Children Within 30 Miles of a Coal-Fired Power Plant

Data Sources: U.S. Census Population Estimates for 1997; "Estimated Prevalence and Incidence of Lung Disease by Lung Association Territory," American Lung Association, 2001 (data is for 1998).

### Exposure from Plants in State

Plant	State	County	Exposed Population	Children Under 18	Children in Pediatric Poverty	Asthma
Joliet 29	IL	Will	3,407,599	843,290	160,673	50,054
E D Edwards	IL	Peoria	428,522	109,180	19,995	5,865
Coffeen	IL	Montgomery	183,916	45,430	8,009	2,492
Grand Tower	IL	Jackson	184,225	40,846	10,510	2,234
Hutsonville	IL	Crawford	88,481	21,341	3,783	1,159
Meredosia	IL	Morgan	116,443	28,926	5,018	1,523
Crawford	IL	Cook	6,622,996	1,648,534	376,720	94,896
Joliet 9	IL	Will	3,517,464	870,733	167,429	51,603
Kincaid	IL	Christian	347,036	84,580	14,708	4,682
Powerton	IL	Tazewell	440,161	111,907	20,400	6,019
Waukegan	IL	Lake	2,374,521	585,402	121,652	34,564
Will County	IL	Will	5,809,875	1,444,298	314,400	84,089
Fisk	IL	Cook	6,398,133	1,592,947	369,447	91,164
Joppa Steam	IL	Massac	85,476	19,917	5,870	1,104
Baldwin	IL	Randolph	339,387	91,618	21,740	4,960
Havana	IL	Mason	179,688	44,009	7,768	2,385
Hennepin	IL	Putnam	224,080	56,675	8,234	3,077
Vermilion	IL	Vermilion	274,978	66,679	12,304	3,489
Wood River	IL	Madison	611,473	160,784	36,668	8,774
Dallman	IL	Sangamon	313,480	75,122	12,487	4,197
Lakeside	IL	Sangamon	313,480	75,122	12,487	4,197
Marion	IL	Williamson	254,696	56,439	15,428	3,118
Duck Creek	IL	Fulton	394,260	99,637	18,973	5,336
Newton	IL	Jasper	156,717	40,172	6,594	2,193